

# TENDER BULLETIN

NO. 23 OF 2022/2023 FY  
REF: 10/3/6/5

16 SEPTEMBER 2022



# LIMPOPO

**PROVINCIAL GOVERNMENT**  
REPUBLIC OF SOUTH AFRICA

This document is also available on the following website:  
[www.limtasury.gov.za](http://www.limtasury.gov.za)

# Provincial Supply Chain Management Office

## TABLE OF CONTENTS

	Page No.
1. REPORTING FRAUDULENT AND CORRUPT ACTIVITIES .....	03
2. INSTRUCTIONS.....	04
3. BIDS INVITATIONS .....	05 - 06
4. CANCELLATION .....	07
5. SPECIAL NOTICES.....	08 - 10
6. GENERAL NOTICES.....	11
7. ANNEXURE 1: ADDRESS LIST AND CONTACT DETAILS: PROVINCIAL DEPARTMENTS.....	12 - 13
ANNEXURE 2: ADDRESS LIST AND CONTACT DETAILS: PUBLIC ENTITIES .....	14 -15
ANNEXURE 3: ADDRESS LIST AND CONTACT DETAILS: PROVINCIAL TREASURY TENDER ADVISE CENTRES .....	16
ANNEXURE 4: ADDRESS LIST AND CONTACT DETAILS: SATELLITE OFFICES .....	17
7. SELF REGISTRATION PROCESS.....	18

**REPORT**

***FRAUDULENT & CORRUPT ACTIVITIES ON GOVERNMENT PROCUREMENT SYSTEM***

---

***National Anti-Corruption @ 0800 701 701***

***Security and Investigating Services – Limpopo Provincial Treasury @ 015 298 7196***

---

***ALL COMPLAINTS/CONCERNS RELATED TO SCM NON-COMPLIANCE MUST BE REPORTED TO:***

***LIMPOPO PROVINCIAL TREASURY***

***PRIVATE BAG X 9486***

***POLOKWANE***

***0700***

***PROVINCIAL TREASURY, FINANCE HOUSE, 56 – 58 PAUL KRUGER STREET, POLOKWANE***

## 2. INSTRUCTIONS

1. Bidders are advised to read the entire tender bulletin.
2. Tenders for procurement of supplies, services and disposals are categorized as follows:

### **SUPPLIES**

- Accommodation, leasing of
- Audio visual equipment
- Building material
- Chemicals: Agricultural/Forestry/
- Laboratory/Water Care
- Clothing/Textiles
- Computer equipment
- Computer software
- Electrical equipment
- Electronic equipment
- Furniture
- General
- Medical
- Office equipment: Labour-saving devices
- Perishable provisions
- Stationary/printing
- Steel
- Timber
- Vehicle (all types)
- Workshop equipment

### **SERVICES**

- Building
- Civil
- Electrical
- Functional (including cleaning-, and security services)
- General
- Maintenance of electrical, mechanical equipment and plumbing
- Mechanical
- Professional
- Repair and maintenance of vehicles
- Transport

### **DISPOSALS**

- Clothing and textiles
- Furniture
- General
- Scrap metal
- Vehicles

3. Bid documents are generally available in English only.
4. The address where a bid document is available from and where it must be submitted to may differ.
5. The addresses at which bid documents may be obtained and tenders must be posted, appear in Annexure 1.
6. The address list of various Supply Chain Management Advice Centres at which bid documents and tender bulletins may also be obtained, appear in Annexure 3; and
7. The address list of Supply Chain Management satellite offices at which tender bulletins may also be obtained, appear in Annexure 4.

3. BID INVITATIONS

BID NO.	DESCRIPTION OF SERVICE OR SUPPLIES	CONTACT DETAILS	BID DOCUMENT PRICE (NON-REFUNDABLE)	DUE AT 11H00	BID DOCUMENTS OBTAINABLE FROM	POST OR DELIVER BIDS TO  (See Annexure 1 & 2)
ACDP 20/17	<p>Rendering of security services for various sites in Capricorn district for Limpopo department of agriculture &amp; rural development.</p> <p><b>Particulars for compulsory Briefing session are as follows:</b></p> <p>Date 27 September 2022 Time: 10H00am Sefene Service Centre (LDARD) Next to Botlokwa South African Police Services Botlokwa (Dwarsrivier) 0818</p> <p><b>NB:</b> Only bidders who comply with <b>PSIRA</b> regulations are targeted for this bid</p> <p><b>Department of Agriculture and Rural Development</b></p>	<p><b>Specifications</b></p> <p>Mr. Phosa MF @015 294 3191 or 082 771 3492 or by email <a href="mailto:phosamf@agric.limpopo.gov.za">phosamf@agric.limpopo.gov.za</a></p> <p><b>Administration</b></p> <p>Mr Ndlozi VS @ 015 294 3564 or by email at <a href="mailto:NdloziV@agric.limpopo.gov.za">NdloziV@agric.limpopo.gov.za</a></p>	N/A	18 October 2022	<a href="http://www.limpopo.gov.za">www.limpopo.gov.za</a>	110
HEDP 007/22/23	<p>Supply, Delivery of Fire Tube Boiler Coal to all Health Institutions (Hospitals) in Limpopo Department of Health for the Period of Thirty Six (36) Months.</p> <p><b>N.B:</b> Bid box dimensions: 150 mm H x 400 mm W</p>	<p><b>Bidding Process</b></p> <p>Ms. Simango T.O @015 293 6352 / 861 9937 E-mail: Tintswalo. <a href="mailto:Simango@dhsd.limpopo.gov.za">Simango@dhsd.limpopo.gov.za</a></p> <p>Ms. Motene N.M @ 015 293 6350 E-mail: Ntlama. <a href="mailto:Maphahlele@dhsd.limpopo.gov.za">Maphahlele@dhsd.limpopo.gov.za</a></p> <p><b>Technical Specification</b></p> <p>Mr. Ramulai J @ 015 293 6422 /</p>	N/A	25 October 2022	<p><a href="http://www.idoh.gov.za">www.idoh.gov.za</a></p> <p>and</p> <p><a href="http://www.eteenders.gov.za">www.eteenders.gov.za</a></p>	103

		072 026 3380 E-mail: James. Ramulai@dhsd.limpopo.gov.za				
	<b>Department of Health</b>					
DSDP 56/22	Re-Advertisement: Provision of Catering Services at Polokwane Welfare Complex for a Period of Three Years.  <b>Compulsory briefing session</b>  <b>Date:</b> 06 October 2022 <b>Venue:</b> Welfare Complex (formerly Place of Safety) <b>Time:</b> 09h30  <b>Department of Social Development</b>	<b>Administrative Enquiries</b> Seopa P A@ 015 230 4440 / 079 699 2308  <b>Technical Enquiries</b> Mr Cholo P W @ 015 291 2226/060 963 2575	R90.00	14 October 2022	<a href="http://www.dsd.limpopo.gov.za">www.dsd.limpopo.gov.za</a>  and <a href="http://www.eteenders.gov.za">www.eteenders.gov.za</a>	100
DSDP 55/22	Re-Advertisement: Provision of Catering Services at Tubatse Child and Youth Care Centre for a Period of Three Years.  <b>Compulsory briefing session</b>  <b>Date:</b> 06 October 2022 <b>Venue:</b> Welfare Complex (formerly Place of Safety) <b>Time:</b> 09h30  <b>Department of Social Development</b>	<b>Administrative Enquiries</b> Seopa P A@ 015 230 4440 / 079 699 2308  <b>Technical Enquiries</b> Mr Cholo P W @ 015 233 7016 /060 963 2575	R90.00	14 October 2022	<a href="http://www.dsd.limpopo.gov.za">www.dsd.limpopo.gov.za</a>  and <a href="http://www.eteenders.gov.za">www.eteenders.gov.za</a>	100
DSDP 23/22	Provision of Provision of Clinical Services to Employees of the Department of Social Development.  <b>Non-compulsory briefing session</b>  <b>Date:</b> 5 October 2022 <b>Venue:</b> 21 Biccard Street, Polokwane, Olympic Towers Building Ndou Boardroom, second floor <b>Time:</b> 09h30  <b>Department of Social Development</b>	<b>Administrative Enquiries</b> Seopa P A@ 015 230 4440 / 079 699 2308  <b>Technical Enquiries</b> Mr. Maake E M @ 015 230 4338/071 620 5649	R90.00	14 October 2022	<a href="http://www.dsd.limpopo.gov.za">www.dsd.limpopo.gov.za</a>  and <a href="http://www.eteenders.gov.za">www.eteenders.gov.za</a>	100
MMSEZSO C/2021/22-6	Appointment of a supplier to supply and deliver 10mva substation materials for bulk electricity infrastructure project in MMSEZ north site development	<b>Administrative:</b> Ms. Emily Marishane E-mail: <a href="mailto:Emily.marishane@lieda.co.za">Emily.marishane@lieda.co.za</a>  <b>Technical:</b> Koena Rakabe E-mail: <a href="mailto:K.Rakabe@mmsez.co.za">K.Rakabe@mmsez.co.za</a>	N/A	07 October 2022	LEDA and MMSEZ website s: <a href="http://www.lieda.co.za">www.lieda.co.za</a> <a href="http://www.mmsez.co.za">www.mmsez.co.za</a>	114

LEDA					
------	--	--	--	--	--

#### 4. BID CANCELLATIONS

**Department of Social Development**

TENDER BULLETIN NO.	BID NO	PROJECT DESCRIPTION	ADVERTISED DATE	CLOSING DATE	REASON FOR CANCELLATION
No. 38 of 2021/2022 FY	DSDP 56/22	Provision of catering services at Polokwane Welfare complex for the period of three (3) years.	21 January 2022	14 February 2022	Expired validity period
No. 38 of 2021/2022 FY	DSDP 55/22	Provision of catering services at Tubatse Child and Youth Care Centre for the period of three (3) years.	21 January 2022	14 February 2022	Expired validity period

**MMSEZ**

TENDER BULLETIN NUMBER	BID NUMBER	PROJECT DESCRIPTION	DATE ADVERTISED	DATE CLOSED	REASON FOR CANCELLATION
No. 40 of 2021/2022 FY	MMSEZSOC/2021/22-6	Appointment of a supplier to supply and deliver 10 mva substation materials for bulk electricity infrastructure project in MMSEZ north site development	04 February 2022	25 February 2022	The validity period expired

5. SPECIAL NOTICES

NOTICE TO ALL BIDDERS

AMENDMENT OF SPECIFICATION AND EXTENSION OF CLOSING DATE: HEDP031/21/22- PROVISION OF PHARMACEUTICAL WAREHOUSE SOLUTION (WAREHOUSE, WAREHOUSE MANAGEMENT SYSTEM, ACQUISITION, STORAGE AND DISTRIBUTION OF MEDICINE AND SURGICAL SUNDRIES) IN POLOKWANE FOR THE LIMPOPO DEPARTMENT OF HEALTH FOR A PERIOD OF SIXTY (60) MONTHS.

1. The above mentioned bids was advertised on 17 June 2022 in the Tender bulletin no.11 of 2022/23, with a closing date 29 July 2022.
2. The bid was later extended to on Tender bulletin no.15 of 2022/23FY with a closing date 21 September 2022.
3. Bidders should take note that the Department has made amendments on the specification as follows and extended the closing date to **30 September 2022** :

3.1. AMENDMENT NO.1: TECHNICAL SPECIFICATION

7.1. WAREHOUSE BUILDING

Item Number	ORIGINAL DESCRIPTION	REVISED DESCRIPTION
7.1.1.	<p><b><u>Warehouse Building:</u></b></p> <ul style="list-style-type: none"> <li>❖ The service provider must provide a <b>minimum of 10 000 square meters</b> warehouse space.</li> <li>❖ All bidders will be expected to comply with requirements as listed in Annexure A for the warehouse.</li> <li>❖ The successful bidder must provide a building which must be licenced with National Department of Health, SAHPRA and recorded with SAPC before occupation, as well as compliance with all requirements as listed in <b><u>Annexure B.</u></b></li> </ul>	<p><b><u>Warehouse Building:</u></b></p> <ul style="list-style-type: none"> <li>❖ The service provider must provide a <b>minimum of 8 000 to a maximum 12 000 square meters</b> warehouse space.</li> <li>❖ All bidders will be expected to comply with requirements as listed in Annexure A for the warehouse.</li> </ul> <p>The successful bidder must provide a building which must be licenced with National Department of Health, SAHPRA and recorded with SAPC before occupation, as well as compliance with all requirements as listed in <b><u>Annexure B.</u></b></p>

**NB: BIDDERS TO INDICATE COMPLIES YES/NO AS PER SPECIFICATION**



**7.3. ( ANNEXURE A) BUILDING SPECIFICATION**

NO	ORIGINAL DETAILS	REVISED DETAILS
7.3.1.	<p><b>WAREHOUSE SPACING</b></p> <ul style="list-style-type: none"> <li>❖ <b>Minimum 10 000 square meters</b> of the operation area without the office space which covers the:</li> <li>❖ Storage area</li> <li>❖ Receiving area</li> <li>❖ Dispatch area</li> </ul> <p><i>The 10 000sqm can be one or max of 2 warehouses (At a ratio 1:1 or 1:2)</i></p>	<p><b>WAREHOUSE SPACING</b></p> <ul style="list-style-type: none"> <li>❖ <b>Minimum 8 000 to 12 000 sqm</b> of the operation area without the office space which covers the:</li> <li>❖ Storage area</li> <li>❖ Receiving area</li> <li>❖ Dispatch area</li> </ul> <p><i>The 8 000 to 12 000sqm can be one or max of 2 warehouses (At a ratio 1:1 and 1:2)</i></p>

**NB: BIDDERS TO INDICATE COMPLIES YES/NO AS PER SPECIFICATION**

**3.2. AMENDMENT NO.2: PHASE 1 ADMINISTRATIVE REQUIREMENTS**

ITEM NO.	ORIGINAL SPECIFICATION	REVISED SPECIFICATION
8.1.1.1.	Pharmaceutical Warehouse Management Services shall take place within <b>120 calendar days</b> of award. <b>Bidder shall submit a letter on the company letterhead committing and binding/obligating the bidder that the pharmaceutical warehouse management services will take place within 120 calendar days of an award.</b>	Pharmaceutical Warehouse Management Services shall take place within the period not exceeding <b>twelve (12) months</b> . <b>Bidder shall submit a letter on the company letterhead committing and binding/obligating the bidder that they shall supply pharmaceutical warehouse management services within a period not exceeding 12 months after the award.</b>

**3.3. AMENDMENT NO.3 : PHASE 4 SITE INSPECTION ON PROPOSED SITE**

The fifth stage of evaluation includes conducting site inspection and only service providers who score a minimum of 70 points on functionality evaluation shall be eligible for the fourth stage.

**11. ORIGINAL CRITERION**

TOTAL SCORE			100	
ACCEPTABLE MINIMUM SCORE			70	
NO	BUSINESS REQUIREMENT	WEIGHT	ELEMENT BREAKDOWN	SCORING VALUES
11.1.	Size of the Proposed Site(s) based in Polokwane Local Municipality.  <i>The bidder may provide a maximum of two sites with a ratio of 1:1 or 1:2</i>	50	The service provider must attach a copy of the address (municipality bills) for the proposed site(s) or valid lease agreement or a letter of intent with the intended warehouse facility.	
			Above 10 000 Square Metres	<b>Excellent (4)</b>
			Less than 10 000 Square Metres	<b>Poor (1)</b>

**REVISED CRITERION**

TOTAL SCORE			100	
ACCEPTABLE MINIMUM SCORE			70	
NO	BUSINESS REQUIREMENT	WEIGHT	ELEMENT BREAKDOWN	SCORING VALUES
11.1.	Size of the Proposed Site(s) based in Polokwane Local Municipality.  <i>The bidder may provide a maximum of two sites with a ratio of 1:1 and 1:2</i>	50	The service provider must attach a copy of the address (municipality bills) for the proposed site(s) or valid lease agreement or a letter of intent with the intended warehouse facility.	
			Above 8 000 Square Metres	<b>Excellent (4)</b>
			Less than 8 000 Square Metres	<b>Poor (1)</b>

**NB: Prospective bidders are hereby notified that the Department has extended the closing date to 30 September 2022.**

Enquiries may be directed to the below officials:

<u>Contact details:</u>
<b>BIDDING PROCESS</b>
Ms. Simango T.O (015) 293 6352 / (071) 861 9937 Ms. Motene N.M (015) 293 6350 / (063) 692 9368
<b>TECHNICAL : WAREHOUSE</b>
Mr. Setshedi R (015) 293 6559 / (083) 297 9934 Mr. Langa T.Z.M (015) 223 9080 / (082) 990 7126

**6. GENERAL NOTICES**

**LIMPOPO (SCM ADVICE CENTERS) CSD CALL CENTRE LINES FOR SUPPLIERS**

<b>DISTRICT</b>	<b>CALL CENTRE NUMBER</b>	<b>OFFICIAL RESPONSIBLE</b>	<b>TIME</b>
Capricorn	015 291 2684	Mr. Holeni TI	07H30 TO 16H30
Mopani	015 812 0256	Mr. Khosa WR	07H30 TO 16H30
Sekhukhune	013 265 1071	Mr. Sehale MS	07H30 TO 16H30
Vhembe	015 962 0014	Mrs. Moshabi A	07H30 TO 16H30
Waterberg	014 717 1376	Mrs. Tsatsi AT	07H30 TO 16H30

**ANNEXURE 1: ADDRESS LIST AND CONTACT DETAILS: LIMPOPO PROVINCIAL DEPARMENTS**

UNIQUE REF. NO.	BID DOCUMENT REFERENCE	CONTACT DETAILS	DOCUMENTS SOLD AT:	DOCUMENTS DEPOSITED AT
100	DSDP	Tel: 015 293 6000 Fax: 015 293 6211 Website: <a href="http://www.limpopo.gov.za">www.limpopo.gov.za</a>	<b>Department of Social Development</b> , Office No. 57 Ground Floor, 21 Biccarr Street POLOKWANE	Deposited in the box located at Department of Social Development, 21 Biccarr Street Polokwane
101	LPT	Tel: 015 298 7000 Fax: 015 295 7010 Website: <a href="http://www.limpopo.gov.za">www.limpopo.gov.za</a>	<b>Provincial Treasury</b> 46 Hans Van Rensburg Street, POLOKWANE and all Provincial Treasury Tender Advice Centres	Deposited in the bid box located outside a guard house at Ismini Towers, 46 Hans Van Rensburg Street, Polokwane
101A	TC/LP	Tel: 015 291 8400 Fax: 015 295 3310 Website: <a href="http://www.limpopo.gov.za">www.limpopo.gov.za</a>	<b>Provincial Treasury</b> 56 – 58 Paul Kruger Street, POLOKWANE and all Provincial Treasury Tender Advice Centres	Deposited in the bid box located in the main entrance, Finance House Building, 56-58 Paul Kruger Street, Polokwane
102	PRDP	Tel: 015 287 6000 Fax: 015 295 3840 Website: <a href="http://www.limpopo.gov.za">www.limpopo.gov.za</a>	<b>Office of the Premier</b> , 40 Hans van Rensburg Street, POLOKWANE and all SCM Advice Centres	Deposited in the bid box located at Mowaneng Building, 40 Hans van Rensburg Street, Polokwane
103	HEDP	Tel: 015 293 6000 Fax: 015 293 6211 Website: <a href="http://www.limpopo.gov.za">www.limpopo.gov.za</a>	<b>Department of Health</b> , Office No. D3 Ground Floor, Old Capricorn Building, 18 College Street, POLOKWANE and all Provincial Treasury Tender Advice Centres	Deposited in the box located at Department of Health and Social Development, 18 College Street, Polokwane
104	LPEDT	Tel: 015 290 7600/1 Fax: 015 297 4494 Website: <a href="http://www.limpopo.gov.za">www.limpopo.gov.za</a>	<b>Department of Education</b> , Corner 113 Biccarr and 24 Excelsior Streets, POLOKWANE and all Provincial Treasury Tender Advice Centres	Deposited in the bid box located in the main entrance of corner 113 Biccarr Street and Excelsior Street, Polokwane
105	PUDP	Tel: 015 295 1000 Fax: 015 295 1163 Website: <a href="http://www.limpopo.gov.za">www.limpopo.gov.za</a>	<b>Department of Transport and Community Safety</b> , 40 Paul Kruger Street, POLOKWANE and all Provincial Treasury Tender Advice Centres	Deposited in the bid box located at 1 <sup>st</sup> Floor, Paul Kruger Wing, 40 Paul Kruger Street, Polokwane
106	COGHSTA	Tel: 015 294 2000 Fax: 015 295 4190 Website: <a href="http://www.limpopo.gov.za">www.limpopo.gov.za</a>	<b>Department of Co-Operative Governance, Human Settlements &amp; Traditional Affairs</b> , 28 Market Street, Office No. G 74, Ground Floor, Polokwane.	Deposited in the bid box located at Hensa Towers, Cnr of Rabe and Landdros Mare Streets, Polokwane
107	DSAC	Tel: 015 284 4000 Fax: 015 284 4514 Website: <a href="http://www.limpopo.gov.za">www.limpopo.gov.za</a>	<b>Department of Sport, Arts and Culture</b> Olympic Towers, Corner Rabe and Biccarr Street, POLOKWANE and all Provincial Treasury Tender Advice Centre	Deposited in the bid box located in the main entrance of Olympic Towers, Corner 21 Rabe and Biccarr Street, Polokwane

**LIMPOPO PROVINCIAL TENDER BULLETIN NO. 23 of 2022/23 FY 09 SEPTEMBER 2022**

108	LEDET	Tel: 015 293 8300 Fax: 015 293 8319 Website: <a href="http://www.limpopo.gov.za">www.limpopo.gov.za</a>	<b>Department of Economic Development, Environment &amp; Tourism</b> , 90 Bok Street, POLOKWANE and all SCM Advice Centres	Deposited in the bid box located in the main entrance of Evridiki Towers, 19 Biccard Street, Polokwane
109	LDPW & WODP	Tel: 015 284 7000 Fax: 015 284 7031 Website: <a href="http://www.limpopo.gov.za">www.limpopo.gov.za</a>	<b>Department of Public Works, Roads and Infrastructure</b> ; Towers, 43 Church Street, POLOKWANE and all Provincial Treasury Tender Advice Centres	Deposited in the bid box located at Corner Blaawberg and River Street Ladanna Polokwane 0699 Private Bag X9490 Polokwane 0700
110	ACDP	Tel: 015 294 3000/30/60/90/20 Fax: 015 294 4506 Website: <a href="http://www.limpopo.gov.za">www.limpopo.gov.za</a>	<b>Department of Agriculture</b> , Temo Towers, 69 Biccard Street, POLOKWANE and all Provincial Treasury Tender Advice Centres	Deposited in the bid box located in the main entrance of AgriVillage, 69 Biccard Street, Polokwane

**ANNEXURE 2: ADDRESS LIST AND CONTACT DETAILS: LIMPOPO PUBLIC ENTITIES**

UNIQUE REF. NO.	BID DOCUMENT REFERENCE	CONTACT DETAILS	DOCUMENTS SOLD AT:	DOCUMENTS DEPOSITED AT
111	RFB: LIMP	Tel: 015 293 3621 Fax: 015 293 3660 Website: <a href="http://www.golimpopo.com">www.golimpopo.com</a>	<b>State Information Technology Agency (SITA)</b> Limpopo Office, Moolman Building, 27 Market Street, POLOKWANE, 0699	Bid box located in the Main Entrance of Moolman Building, 27 Market Street, Polokwane
112	LTA	Tel: 015 293 3600 Fax: 015 293 3655 Website: <a href="http://www.golimpopo.com">www.golimpopo.com</a>	<b>Limpopo Tourism Agency</b> , ERF 92/688, Portion 2 Southern Gateway, Ext 4, N1 Main Road, Polokwane 0699	Bid box located in the offices ERF 92/688, Portion 2 Southern Gateway, Ext 4, N1 Main Road, Polokwane 0699
113	LGB	Tel: 015 295 5581 Fax: 015 295 3566 Website: <a href="http://www.lgb.org">www.lgb.org</a>	<b>Limpopo Gambling Board</b> , 08 Hans van Rensburg Street, POLOKWANE, 0699	Bid box located in the main entrance, 8 Hans van Rensburg Street, Polokwane, 0699
114	LEDA	Tel: 015 633 4700 Fax: 015 633 4854 Website: <a href="http://www.leda.co.za">www.leda.co.za</a>	<b>Limpopo Economic Development Agency</b> Enterprise Development Finance, Main Road Lebowakgomo	Bid box located in the main entrance, Enterprise Development Finance, Main Road Lebowakgomo
115	RAL	Tel: 015 284 4600 Fax: 015 284 4701 Website: <a href="http://www.ral.co.za">www.ral.co.za</a>	<b>Road Agency Limpopo (RAL)</b> , RAL Towers, 26 Rabe Street, POLOKWANE, 0700	Bid box located in the entrance foyer (ground floor) of RAL Towers, at 26 Rabe Street, Polokwane
116	GAAL	Tel: 015 288 0122 Fax: 015 288 0346 Website: <a href="http://www.gaal.co.za">www.gaal.co.za</a>	<b>Gateway Airports Authority Limited</b> , N1 Road to Louis Trichardt, Army Base, POLOKWANE International Airport, Polokwane, 0700	Bid box located in the main entrance, ground floor of administration building, Polokwane International Airport, Army Base
117	VIVET	Tel: 015 963 3156 Fax: 015 963 3154 Website: <a href="http://www.vhembecollege.edu.za">www.vhembecollege.edu.za</a>	<b>Vhembe TVET College</b> , Central Office, Site No 203 SIBASA 0970	<b>Vhembe TVET College</b> , Central Office, Site No 203 SIBASA 0970
118	WTVET	Tel: 015 491 8581/8602 Fax: 015 491 8579 Website: <a href="http://www.procurement@waterbergcollege.co.za">www.procurement@waterbergcollege.co.za</a>	<b>Waterberg FET College</b> , Central Office, 36 Hooge Street Street, Mokopane, 0600	<b>Waterberg FET College</b> , Central Office, 36 Hooge Street Street, Mokopane, Private Bag x 2449, Mokopane 0600
119	GNT	Tel. 015 291 2641 Fax. 015 291 2648	No. 130a Marshall Street, Polokwane.0700	Great North Transport No. 130 Marshall Street, Polokwane.0700
120	MT	Tel. 015 2907715/7772	<b>Mvula Trust</b> 25 Rhodesdrift Street, Rhodesdrift Office Park, Bendor Ext 30, Polokwane	<b>Mvula Trust</b> 25 Rhodesdrift Street, Rhodesdrift Office Park, Bendor Ext 30, Polokwane
121	CCTVET	Tel.015 230 1800 Fax. 015 291 2767	Capricorn College for TVET 16 Market Street, Polokwane	Private Bag Bag X9674 Polokwane0700
122	IDT	Tel: 015 295 0000 Fax: 015 295 6559	<b>Independent Development Trust</b> 22 Hans van Rensburg Street, Polokwane, 0700	<b>Independent Development Trust</b> P.O.Box 55386 Polokwane 0700

123	DBSA	scmqueries@dbsa.org	<b>Development Bank of Southern Africa</b> Welcome Centre 1258 Lever Road Midrand	<b>Development Bank of Southern Africa</b> Welcome Centre 1258 Lever Road Midrand
-----	------	---------------------	--	--

**ANNEXURE 3: ADDRESS LIST AND CONTACT DETAILS: PROVINCIAL TREASURY TENDER ADVICE CENTRES**

(Tender bulletins and bid documents are obtainable from the following Centers):

<b>PROVINCIAL TREASURY SUPPLY CHAIN MANAGEMENT ADVICE CENTRES</b>	
<p><b>HEAD OFFICE</b></p> <p>Provincial Supply Chain Management Office 56 – 58 Paul Kruger Street POLOKWANE Private Bag x9494 <b>POLOKWANE, 0700</b> <b>Tel No. (015) 291 8400</b></p> <p>Contact: <b>Ms. M.B Rakubu @ Tel: 015 291 8717/6</b></p>	<p><b>Capricorn SCM Advice Centre</b></p> <p>Limpopo Provincial Treasury 56-58 Paul Kruger Street Private Bag x9494 <b>POLOKWANE, 0700</b> <b>Tel No. (015) 291 8400</b></p> <p>Contact Person: <b>Mr. T.I Holeni</b></p>
<p><b>Vhembe SCM Advice Centre</b></p> <p>Limpopo Provincial Treasury Government Building Complex BLOCK E GROUND FLOOR <b>THOHOYANDOU, VENDA</b> Tel: (015) 962 1752 Fax: (015) 962 1282</p> <p>Contact Person: <b>Ms. A Manena</b></p>	<p><b>Mopani SCM Advice Centre</b></p> <p>Limpopo Provincial Treasury Private Bag X 1973 <b>GIYANI, 0826</b> Tel: (015) 812 0149 Fax: 086 219 7905</p> <p>Contact Person: <b>Mr. W.R Khosa</b></p>
<p><b>Waterberg SCM Advice Centre</b></p> <p>Limpopo Provincial Treasury 98 Nelson Mandela Street Decimale Building <b>MODIMOLLE</b> Tel: (014) 717 5837 Fax: (014) 717 5670</p> <p>Contact Person: <b>Mr. AT Tsatsi</b></p>	<p><b>Sekhukhune SCM Advice Centre</b></p> <p>Limpopo Provincial Treasury Lefa Centre, Schoonoord Road <b>JANE FURSE</b> Tel: (013) 265 1344 Fax: (013) 265 1354</p> <p>Contact Person: <b>Mr. M. S. Sehale</b></p>

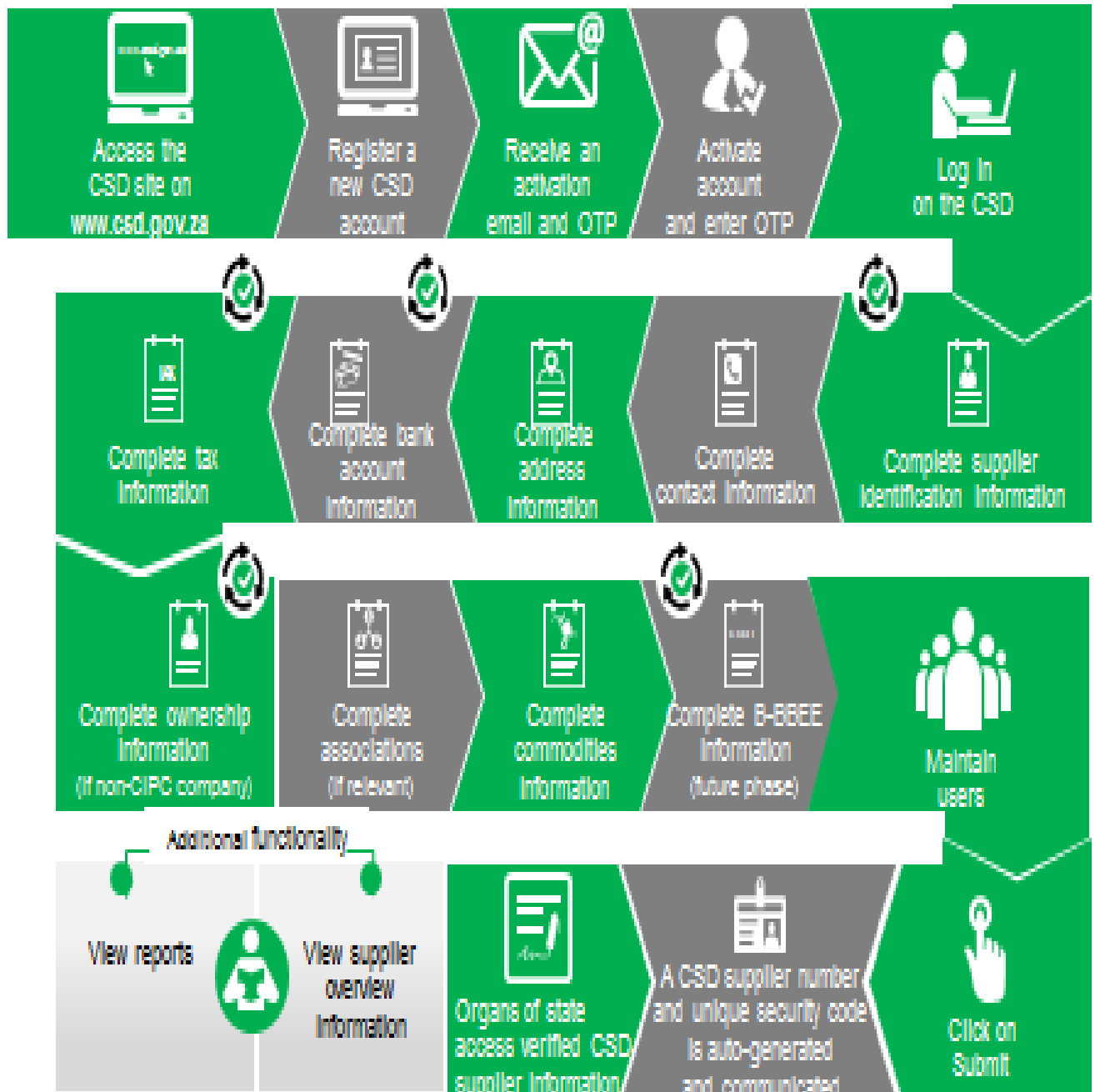


**ANNEXURE 4: ADDRESS LIST AND CONTACT DETAILS: SATELLITE OFFICES**

(Tender bulletins are obtainable from the following centers)

<b>CAPRICORN</b>	<b>VHEMBE</b>	<b>MOPANI</b>	<b>WATERBERG</b>	<b>SEKHUKHUNE</b>
			Libsa Thabazimbi: No.08 Riet Bok Street Tel. No. (014) 772 2437	
			Libsa Lephalale No. 3A Venter Street Tel. No. (014) 763 2834	

# Supplier Self-Registration Process



Auto verification of supplier information with SARS, GPC etc